

SSI offers its model M140 Dual-Shear™ shredders to process materials including:

- Mixed Waste
- Passenger and Truck Tires
- Steel Drums
- Plastics (Purgings and Film)
- Appliances
- Wood / Pallets
- Demolition Waste
- Fibers / Textiles / Foam
- Baled and Bulky Materials
- Metals
- Paper / Cardboard and more...

## DIRECT HYDRAULIC DRIVE

M140 shredders are ideally suited to meet diverse processing requirements including:

- Mixed or unsorted materials.
- Batch fed materials.
- Materials containing non-shreddables.
- Materials requiring enhanced particle size or throughput control.
- Installations requiring optional reduced voltage starting.

## SSI ADVANTAGES

### High-torque, low-speed design

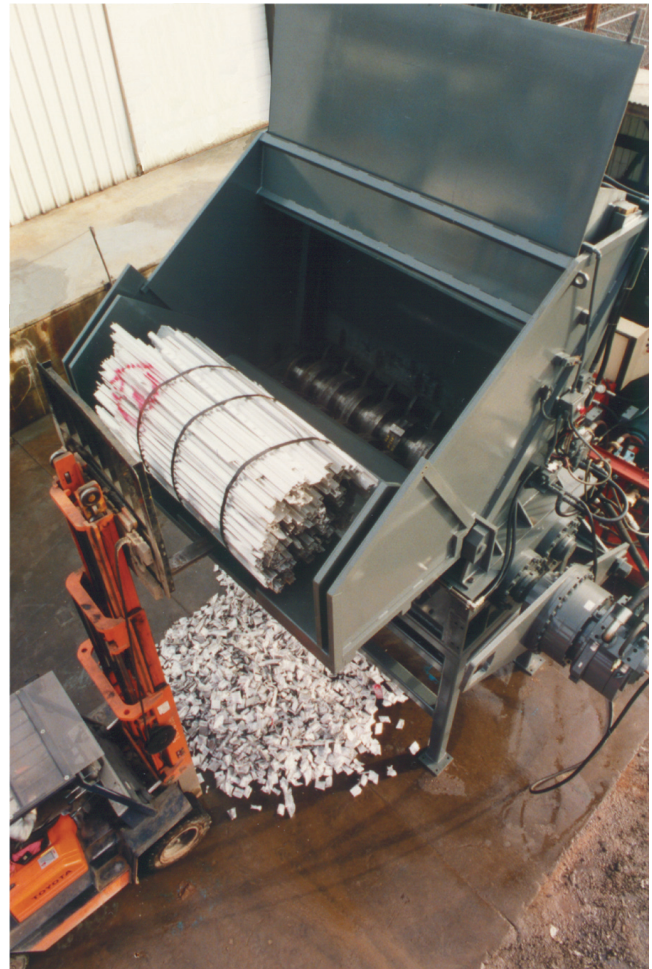
Delivers multipurpose shredding with greater on-line reliability and lower maintenance requirements than other technologies.

### Direct drive motor

Provides improved efficiency and reliability. Alternate speed and torque combinations available.

### Shock load protection feature

Protects shredder and drive components. System utilizes multiple relief valves.



### Auto reversal feature

Protects against overfeeding and damage by non-shreddables.

### Patented ACLS - Advanced Cutter Locking System™

Eliminates daily requirement to tighten cutter stack while improving shredder performance and cutter life.

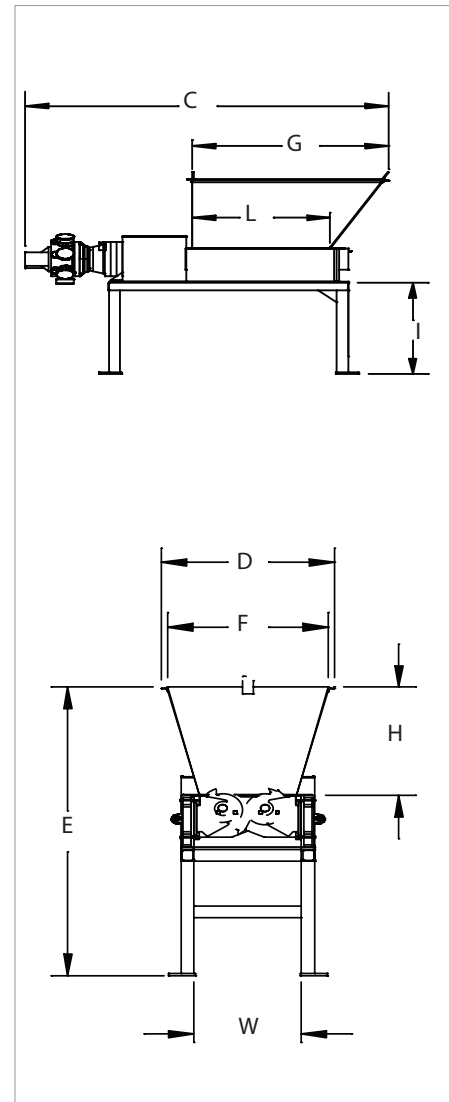
### Proprietary bearing protection

Isolates bearings from cutting chamber contamination and protects against bearing failure.





**Standard Cutting Chamber (W x L)** 52" x 75" (1320mm x 1905mm)  
 Optional lengths available 100" (2550mm)



SHREDDERS		MODEL M140H	
<b>Drive</b>	Hydraulic		
<b>Number of Electric Motors</b>	Two	(HPU)	
<b>HP</b>	300 HP	(225kW)	
<b>HP Range</b>	300-400 HP	(225-300kW)	
<b>Voltage</b>	460/3/60		
<b>Voltage Options</b>	Many - Consult Factory		
<b>Autochop Feature</b>	Included		
<b>Shock Load Protection</b>	Yes	(Multiple Relief)	
<b>Cutter Thickness (nominal)</b>	2"	(50mm)	
<b>Cutter Diameter</b>	27.1"	(690mm)	
<b>Cutter Material</b>	4140 HT		
<b>Shaft Diameter</b>	9"	(229mm)	
<b>Cutting Chamber (WxL)*</b>	52" x 75"	(1320mm x 1905mm)	
<b>Machine Length (C)*</b>	201"	(5100mm)	
<b>Machine Width (D)</b>	76"	(1925mm)	
<b>Machine Height (E)</b>	164"	(4175mm)	
<b>Machine Weight</b>	42,000 lb	(19,000 kg)	
<b>Hopper Opening (FxG)*</b>	69" x 96"	(1755mm x 2440mm)	
<b>Hopper Height (H)</b>	59"	(1500mm)	
<b>Stand Height (I)</b>	60"	(1525mm)	
<b>HPU Configuration</b>	Open Loop		
<b>HPU Dimensions</b>	17' x 13' x 7.5'	(5.2m x 4m x 2.3m)	
<b>HPU Weight</b>	15,000 lbs	(6,800 kg)	

Motor starting and protection devices are mounted in a single NEMA 4 enclosure. PLC and operator interface are mounted in a second NEMA 4 enclosure.

\* Dimensions apply to the M140 with standard 75" (1905mm) cutting chamber length. For 100" (2555mm) length option add 25" (650mm).

Note: Illustrations, specifications and descriptions presented reflect standard product at time of publication and are subject to change without notice. Dimensions are approximate. Photographs may include optional equipment and accessories. SSI offers compactors, balers, granulators, conveyors and classifiers as well as specialized motors, stands, hoppers, and mobile configurations. Consult factory to discuss your processing needs.

SSI offers a full range of energy-efficient electric and hydraulic shredders as well as custom units to meet all processing requirements.

#### Standard Cutter Profiles

